

5 LIVING IN GÖTTINGEN



CULTURAL LIFE IN GÖTTINGEN

Göttingen offers a myriad of possibilities for recreational activities. The town has three theatres, a symphony orchestra and several cinemas. Popular annual events include the Nacht der Kultur, the Jazz Festival, the International Literature Festival and the European Film Festival.

CINEMA

Göttingen, which in the 1950's and early 60's was a 'film-city', offers a wide variety of options for cinema and film lovers. Multiplex CinemaxX offers a large number of major commercial films, mostly shown in German. Tuesday is discount day, and there are also student discounts. www.cinemaxx.de

The cinema "Lumière" mostly shows alternative, commercially non-profitable and thereby rarely shown films. Many films are shown in the original version and are sometimes accompanied by lectures and discussions. www.lumiere.de. Lumière also organises thematic or countrybased film festivals, like the European Film Festival. www.filmfest-goettingen.de.

In summer, an open air cinema takes place in one of the outdoor swimming pools (Freibad Brauweg). Films start at 10 p.m. when it gets darker. Make sure to bring your picnic blankets and a pullover with you! The Open-Air-Kino programme can be found on the Lumière webpage.

MUSIC

Göttingen offers a lot to those who appreciate classical and modern music. It's symphony orchestra, founded in 1862, plays an ambitious programme which guarantees first-class concerts. Thanks to the culture ticket, Göttingen students only have to pay a 1 Euro entrance fee. www.gso-online.de

Every year at the end of May, the Händel Festival takes place in Göttingen. It is the oldest festival of baroque music worldwide and it attracts artists and audiences from all over the world. www.haendel-festspiele.de

Autumn is brightened by the Soundcheck Festival for New Music and the Göttingen Jazz Festival.

www.ndr.de/unterhaltung/events/soundcheck
www.jazzfestival-goettingen.de

DID YOU KNOW?

In Germany, all movies are dubbed before being shown on the TV or in the cinema.

If you want to watch a movie in the original language, you have to search for OV or OmU next to the title or in the description of the movie. OV stands for "original language without subtitles" and OmU "original language with German subtitles". Some TV stations offer a second channel on which to watch the movie in the original language.

In addition to that, the student film clubs, ClubKino and Unifilm, show films in the largest university lecture halls, charging students only 2 Euros. These are mostly recent mainstream films (domestic and international), screened a few months after their regular run.

www.studentenwerk-goettingen.de/clubkino.html
www.unifilm.de/studentenkinos/goettingen/campusfilm



There are also larger musical acts which often take place in the Lokhalle and Stadthalle. In addition, many student pubs and bars regularly host live bands.

www.stadthalle-goettingen.de
www.lokhalle.de

THEATRES

5

The Deutsches Theater (German Theatre) is the oldest theatre in Göttingen. It focuses on classic as well as contemporary plays and guest plays from other theatres. Every September, the Deutsches Theater hosts the Theater im Innenhof (Theatre in the Courtyard), a festival during which well-known actors from all over Germany come to perform. www.dt-goettingen.de

Another venue, the Junges Theater (Young Theatre), was founded in the sixties and presents contemporary plays and caters to a young crowd. Some of the country's most celebrated young author's stage the first runs of their new plays here. www.junges-theater.de

There are also performances at the unique ThOP (Theater im OP) – the theatre in the former surgery lecture room. The plays are produced and performed mostly by students. For those who like to write plays, there is a contest each September. www.thop.uni-goettingen.de

In addition to that, figure theatre, Kabarett (comedy acts, sometimes political), puppet shows, variety shows and many amateur theatre groups perform in and around Göttingen.

The university culture ticket gives free entrance to most of the plays.

MUSEUMS AND EXHIBITIONS



The Göttingen museum landscape is dominated by the varied collections owned by the university. Here you will find a description of the major collections.

www.uni-goettingen.de/collections

The university's botanical gardens boast collections of rare plants from all over the world and can be accessed every day on a free of charge basis. Larger exhibitions of contemporary artists are often shown in Göttingen's Old Town Hall (Altes Rathaus). Göttingen's Art Guild (Kunstverein) has seasonal exhibitions and a free entry for students.

www.kunstvereingoettingen.de

The Apex gallery and pub is one of many small city galleries hosting exhibitions which may be viewed free of charge. www.apex-goe.de

The Göttingen city museum takes visitors for a walk through Göttingen's municipal history and also hosts special exhibitions.

www.museum.goettingen.de

For further information on Göttingen and what the city has to offer, see this website:

www.goettingen.de

www.goettingen-tourismus.de

GOING OUT



RESTAURANTS AND CAFÉS

There is a great variety of different restaurants in Göttingen such as Italian, Turkish, Greek, Indian, Asian, Persian, Ethiopian, and Mexican. The prices are mostly student-friendly.

From spring to autumn, it is hard to choose which café to visit. Throughout the city, tables are set up in courtyards or on the pavement and invite you to take a break with a piece of

TIPS/SERVICE CHARGE

In Germany, it is not common to simply leave the money for the bill on the table. Usually you pay the bill directly to the waiter. Just tell your waiter/waitress "Bezahlen, bitte" when you are ready to leave.

In most restaurants and cafés, the prices cited already include VAT (value added tax) and a service charge. However, when paying the bill, people generally tip the waiter. There is no rule for what is a reasonable tip: sometimes this just means rounding up to the next Euro, sometimes this can involve adding a Euro or two, depending on the size of your bill.

You do not leave the tip on the table, instead you either state the amount you wish to pay or say how much change you'd like to receive.

cake, a cup of coffee, tea or cold drinks. When you sit outside, don't be surprised if the waiter asks you to pay for your order immediately after it has been served. When you sit inside, the bill is usually paid when you leave.

PAYING THE BILL

When you go to restaurants/cafes with friends or acquaintances, it is quite common to ask for separate bills. When you ask for a bill, you will always be asked whether you want to pay together or separately: "Zusammen oder getrennt?" "Zusammen" stands for paying together and "getrennt" for separately.

TAP WATER

Tap water in Germany is potable. Bottled water is either carbonated (mit Kohlensäure) or non-carbonated (ohne Kohlensäure). If you order water in a restaurant, you will be served bottled water and thus will have to pay for it. However, you might also ask for a glass tap water (Leitungswasser) when ordering coffee or wine.

PUBS AND CLUBS

The city centre of Göttingen hosts a vibrant and student-friendly pub and club scene. There are no enforced closing times. Some establishments have live music.

Most clubs and discos in Göttingen are located right in the city centre, and they also cater primarily to students. Evenings with guest DJs and theme nights are usually advertised by posters throughout the city. A “night of the clubs” in October sees live music in all bars and is definitely worth a visit. Once per semester, they even present your professors at the turntable – such nights are always crowded.



PRACTICAL MATTERS

LIVING EXPENSES

Depending on your lifestyle, you will need a minimum of 670 Euros to live comfortably. Keep in mind that a secure financial situation is fundamental to successful studies, especially when abroad.



ESTIMATED LIVING EXPENSES FOR ONE STUDENT PER MONTH (AS FOR 2014):

Housing (rent + utilities)	200 - 300 €
Food	160 €
Clothing	55 €
Health insurance, medical expenses	75 €
Telephone, internet, radio and TV fees	45 €
Books/supplies*	50 €
Going out	50 €
Total	ca. 670 €

This list does not contain semester fees.

* Expenses for books and supplies may be higher depending on your field of study.

FOOD

Assorted food items

Loaf of bread 1 kg	1,50-3,00 €
Rice 1 kg	1,50 €
Apples 1 kg	1,90 €
Tomatoes 1 kg	2,00 €
Cheese 1 kg	8,00 €

Beverages

Water 1 ltr	0,60 €
Orange juice	0,90-2,00 €
Milk 1ltr	0,70-1,10 €
Coffee 1kg	6,00 €
Wine 1 ltr	4,00 €

Eating out

Cup of coffee	1,50 -2,50 €
Salad	5,00 €
Soup	4,00 €
Full meal	5,00 – 13,00 €

ELECTRICITY

Electricity in Germany is 220V, 50Hz AC. Plugs are the European type with two round pins. Any adapters you may need can be bought in a local electronics shop.



TELEPHONE AND INTERNET OPTIONS

If you decide to have a landline and Internet at home, you will need to contact one of the local providers who will install these services for you at an extra cost. If you want to use a German mobile phone, you can either get a contract or use a prepaid calling card. Go to a local phone shop to learn more about options and prices. For international calls you can use call shops, which generally offer good deals.

If you are calling a landline from a mobile phone or from outside another city, the Göttingen area code must be used as a prefix (0551). The German country code is +49.

DID YOU KNOW

Carl Friedrich Gauß and Wilhelm Weber invented and built a 3 km long telegraph to connect the physics laboratory with the observatory to be able to send each other messages. This was the first operational telegraph in the world. For special city events, the telegraph line, which is still intact, is illuminated by night.

Recycling is a big issue in Germany. In most towns you have individual, colour-coded dustbins or skips for paper (blue), plastics/composites (yellow) compost/garden waste (green or brown) and landfill (grey). In addition, there are also public containers for glass, batteries, electrical waste and clothes. There are a couple of things you should know about disposing used items:

Bottles

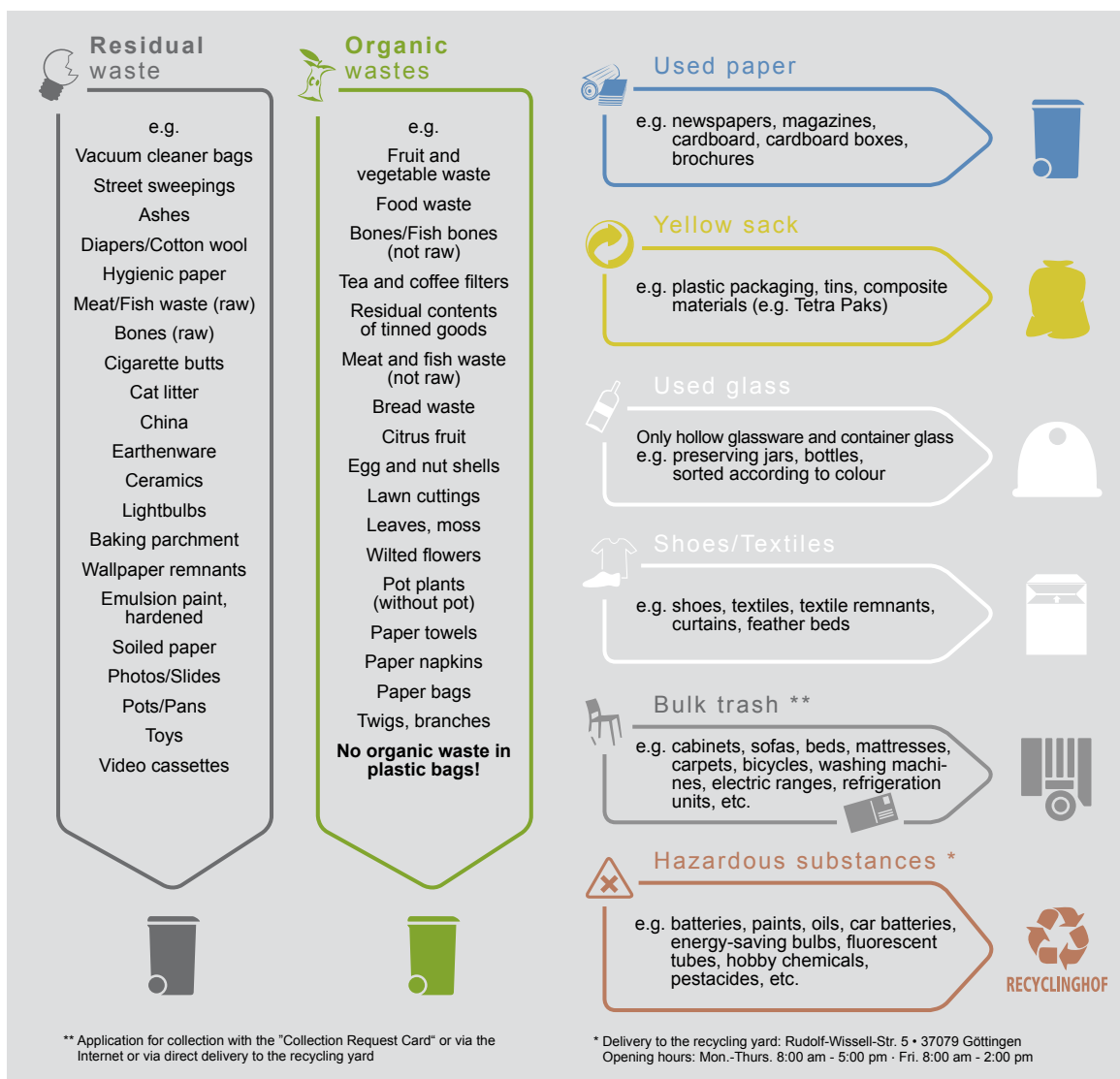
Most drink bottles are refundable and are marked as "Mehrwegflasche" or "Pfandflasche". If you take the bottles back to the supermarket, you will be given a refund (Pfand). Non-refundable bottles, like wine bottles, belong in the glass container (Altglascontainer). One-way plastic bottles go into special yellow plastic bags (Gelber Sack).

Waste Paper

To dispose of old newspapers, cartons etc., you will find blue waste paper containers in front of your house.

"Der gelbe Sack"

On many plastic packages you will find a small sign with an arrow. These packages are to be collected separately from the normal garbage. Therefore you will find either a big yellow garbage bin at your house or you will need yellow bags (Gelber Sack) to collect these packages. Every other week they will be collected by the refuse service when put them on the pavement.





In Germany, there are numerous types of doctors, from general practitioners (Allgemeinmediziner or Hausarzt) to specialists in all fields. It is often advisable to consult a general practitioner first, who will then transfer you to a specialist if necessary.

If you urgently need a doctor at night, during the weekend, or on a public holiday, you will have to turn to the emergency services (ärztlicher Notdienst or ärztlicher Bereitschaftsdienst). You can find the telephone numbers in the Internet. You can also call your general practitioner: usually the answering machine will contain a message telling you which doctor is currently on stand-by duty. It is also possible to go straight to the Accident and Emergency Department (Notfallambulanz) of one of the hospitals at any time.

DID YOU KNOW

It is very easy to compose the correct doctor term in German. Just add the term "arzt" to anything that can become ill or be in pain.

Kinderarzt	=	paediatrician (children's doctor)
Augenarzt	=	ophthalmologist (eye doctor)
Frauenarzt	=	gynaecologist (women's doctor)
Zahnarzt	=	dentist (tooth doctor)

COSTS OF MEDICAL TREATMENT

Statutory health insurance

If you are not a private patient, your doctor will invoice your statutory health insurance provider directly. All you need to do is to present your health insurance card at the surgery. However, for some treatment and services, such as certain dental fillings, dentures, spectacles, contact lenses and particular medications, you have to pay an additional fee even if you are not a private patient.

Private health insurance

If you have a contract with a private health insurance provider you will usually have to pay the costs for treatment and medication yourself and then submit the invoices to the insurance provider for reimbursement. Take careful note of the conditions of your health insurance which stipulate whether the provider will reimburse your costs and at what level. Depending on your insurance premium, certain treatments may be excluded, or you may be required to pay part of the costs yourself.

HOSPITALS

All hospitals, except for some private clinics, are open to all insured patients. When going to a hospital or clinic, take proof of your health insurance with you (although you're unlikely to be refused in case of emergencies).

THE FOLLOWING HOSPITALS IN GÖTTINGEN CATER FOR EMERGENCY ADMISSIONS:

University Hospital (Klinikum)

Robert-Koch-Str. 40, 37075 Göttingen
☎ (0551)-39-0
www.med.uni-goettingen.de

Evangelisches Krankenhaus Weende e.V.

An der Lutter 2, 37075 Göttingen
☎ (0551) 5034-0
www.ekweende.de

Krankenhaus Neu-Mariahilf

Humboldtallee 10/12, 37073 Göttingen
☎ (0551) 49 63-0
www.neumariahilf.de

Neu-Bethlehem

Humboldtallee 8, 37073 Göttingen
☎ (0551) 4 94-0
www.neubethlehem.de



EMERGENCY NUMBERS AND SERVICES

The numbers 110 and 112 can be dialled free of charge from any regular phone, payphone or mobile. It is even possible to dial the emergency numbers without the SIM card or without knowing the mobile's PIN. These numbers are valid for the emergency services throughout Germany.

→ Fire Department, Rescue Service: ☎ 112

→ Police, Emergency Calls,
Traffic Accidents, Assault: ☎ 110

→ Emergency Ambulance
Göttingen: ☎ (0551) 51 79 90

PHARMACIES

Medicine, including painkillers, can only be purchased at pharmacies (Apotheke). Most medicine will require a prescription, although some (e.g. cold and flu remedies, painkillers, hay fever tablets) are available over the counter. There is

at least one pharmacy open or on call both day and night (Notdienst). All pharmacies have a sign in their windows indicating which pharmacy has 'Notdienst' on which date.

SHOPPING FOR DAILY LIFE

Supermarkets: Open Hours

The large grocery stores are usually open from 8 a.m. to 10 p.m. On Sundays and public holidays shops are generally closed. Bakeries are an exception; they often open in the mornings on these days. You can usually find a modest selection of groceries and other products at petrol stations and kiosks during the night and on Sundays.

Groceries

The most comfortable places to shop for groceries are supermarkets (Supermarkt). Many of the large supermarket chains have stores throughout the city and offer inexpensive and good quality products.

Speciality Shops

If you are homesick and craving your traditional food, you can go to one of the speciality shops which offers Asian, African or Latin American ingredients like spices, herbs, etc. They are found all over the city.

Organic / Health Food Stores

In addition, there are several shops in the city centre which offer organically-grown food and produce (Biomarkt or Reformhaus).

Furniture and Tableware

Some rooms to rent are already furnished, but in case you need something else, second-hand furniture can be found at online markets.



Farmer's Market

The farmers from the region around Göttingen sell their products at the weekly market (Wochenmarkt). The market is open every Tuesday and Thursday from 8 a.m. to 1 p.m. and every Saturday from 8 a.m. to 2 p.m. Address: Hospitalstrasse.

Drugstores

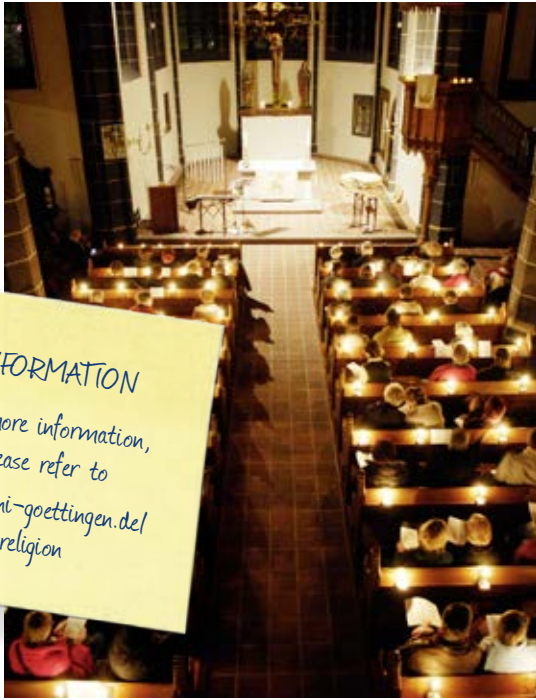
In Germany, drugstores (Drogeriemarkt) offer cosmetics and household products at reasonable prices. However they do not sell any kind of drugs, be it painkillers or any other medicine. Those are only available in pharmacies (Apotheke).

RELIGION

CHRISTIAN COMMUNITIES

There is a Protestant (Evangelische Studierenden- und Hochschulgemeinde) and a Catholic (Katholische Hochschulgemeinde) student community at the University of Göttingen. They conduct services, provide pastoral care and offer a programme of classes open for students and visiting scientists. Most of Göttingen's pa-

ishes are Protestant, a few are Catholic. Some of these parishes offer church services in languages other than German and run groups which maintain country-specific forms of worship. Other religious communities, such as the Baptists or the Russian Orthodox Church, have their own places of worship in Göttingen.



JEWISH COMMUNITIES

A few years ago, two Jewish communities were re-founded in Göttingen: the Göttingen Jewish Community and the Jewish Religious Community for Göttingen and Southern Lower Saxony. Their activities are supplemented by a Jewish house of learning. Its doors are open to all people interested.

MUSLIM COMMUNITIES

The Muslim student community (Islamische Hochschulgemeinde) offers a forum for Muslim students. In Göttingen, the Muslim communities are Islamische Gemeinschaft Al-Iman e.V., DITIB Moschee and Al Taqwa-Verein Göttingen.

TRAVEL ACROSS GERMANY

BY TRAIN

In Germany, you can reach almost all cities by train. Due to its central positioning in Germany, Göttingen has excellent travel connections. The high speed train (ICE) takes 30 minutes to Kassel or Hanover and two hours to Berlin, Hamburg or Frankfurt.

There are different prices depending on the train category: the high-speed ICEs (Intercity Express) are the most expensive, then come ECs/ICs (Intercity train) with a somewhat lower price, and local trains: RegionalExpress (RE), RegionalBahn (RB), Cantus (CAN) or Metronom (ME) are the cheapest.

Moreover, there are discounts if you purchase your ticket in advance. You can get 25 % to 50 % off if you buy your ticket well in advance. On weekends, you can profit from the "Schönes Wochenende" ticket: for approximately 40 Euros, up to five persons can travel throughout Germany (on local trains only). While this is a very cheap way to travel, it is also slow. The "Quer durchs Land" ticket allows you to travel all over Germany on local trains on working days (about 44 Euros).



BAHNCARD

If you frequently travel by train, it may be useful to buy a BahnCard, which reduces the price of a ticket. BahnCard25 costs 41 Euros for students and entitles you to 25 % off the regular price. BahnCard50 costs 127 Euros for students and entitles you to 50 % off the regular price. For additional information see:

www.bahn.de/p_en/view/index.shtml

TRAVELLING BY TRAIN WITH THE STUDENT CARD

With your student ID card you can travel on local trains for free throughout Lower Saxony! Amongst the numerous beautiful cities you can visit are Hannover, Goslar, Bremen, Hamburg, Celle, Kassel, the North Sea, and many more. Don't miss the chance to explore the wonders and interesting attractions these places have to offer!

There are also a number of smaller towns that are worth a visit, which can be seen on a day trip from Göttingen. These are a few examples of the places which you can reach within 2 hours, using local trains:

- **Goslar** is a UNESCO World Heritage Site, famous for its magnificent gates and ramparts, the medieval Imperial Palace, romanesque churches and half-timbered guild houses.
- **Hannoversch Münden** is a small charming town, situated at the confluence of the Fulda and Werra rivers.
- **Hameln** is famous for the pied piper tale and has weekly reenactments of the tale on Sundays in the summer.



BY CAR

Travelling by car is also an option and you don't need to rent one! Yes, it is very common to use the "Mitfahrgelegenheit" service: people who are travelling somewhere and have space in their cars can offer a ride for a good price. It is sometimes a cheap option and also an opportunity to meet people.

www.mitfahrzentrale.de

www.drive2day.de

www.bessermithfahren.de

www.fahrgemeinschaft.de

BY BUS

All long distance buses going via Göttingen stop at Göttingen main station (ZOB).

Just check www.checkmybus.de

